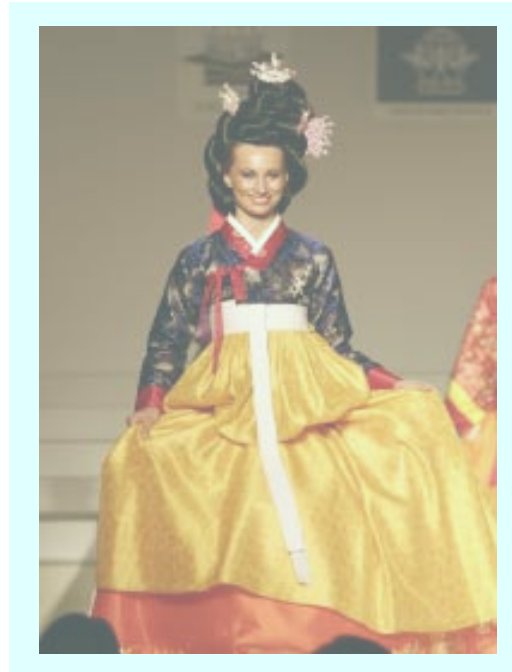


HISTORY OF

KOREAN TRADITIONAL COSTUMES

CELEBRATING 50TH ANNIVERSARY OF ISP

DESIGNER LEE, SOONHWA



PLACE: FAIRCHILD THEATRE @ MSU

DATE: OCTOBER 20, 2006 FRIDAY

TIME: 7:00 P.M.

SPONSORED BY: VISITING INTERNATIONAL PROFESSIONAL PROGRAM
ASIAN STUDIES CENTER